

GDS Capsule Lamp, 2W, 48-54V, 90CRI, 315lm, Fade-to-Warm 1800K-3000K, G6.35



Model No: R-SA1000192

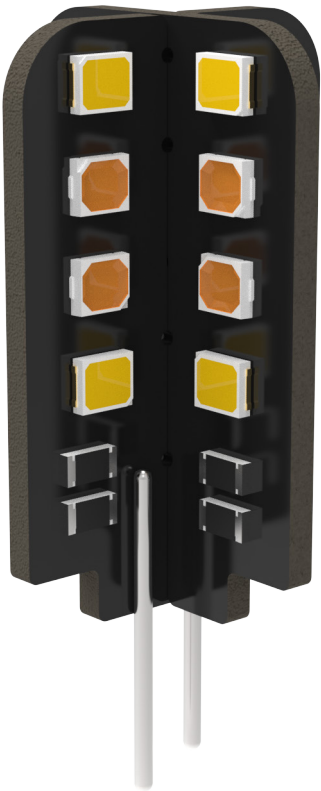
DATASHEET

Introduction

G6.35 Base capsule lamp replacement with 315 lumen output @ 3000K Fade-to-Warm. 53.5V constant voltage drive for use with GDS Drive Hub CV Output Cards.

Key features

- 1800K-3000K Fade-to-warm white light
- 90 CRI
- 360 degree light output
- 2W nominal power draw
- 39mA nominal current
- 48-54V constant-voltage drive.
- G6.35 Base

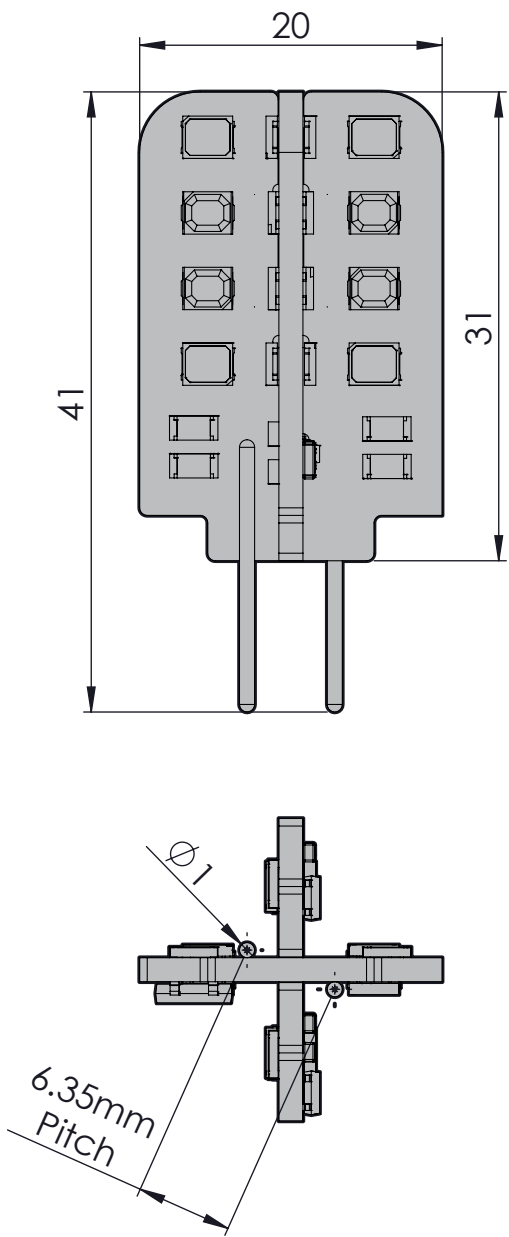


Technical Parameters

Light Colour	1800K-3000K Fade-to-Warm White
CRI	>90
Beam Angle	360°
Minimum Voltage	48V DC
Nominal Voltage	53.5V DC
Maximum Voltage	54V DC
Nominal Current Draw	39mA
Light Output	315 Lumens @ 53.5V
Nominal Power	2W
Required Driver	53.5V Constant Voltage
Input	G6.35 Pins

CAUTION: THIS IS A
LOW VOLTAGE DEVICE

Dimensions



Specifications are subject to change without notice.

Dual-Beam Adjustable Flood Light RGBW, DMX, 15° & 36°



Model No: SPL02734

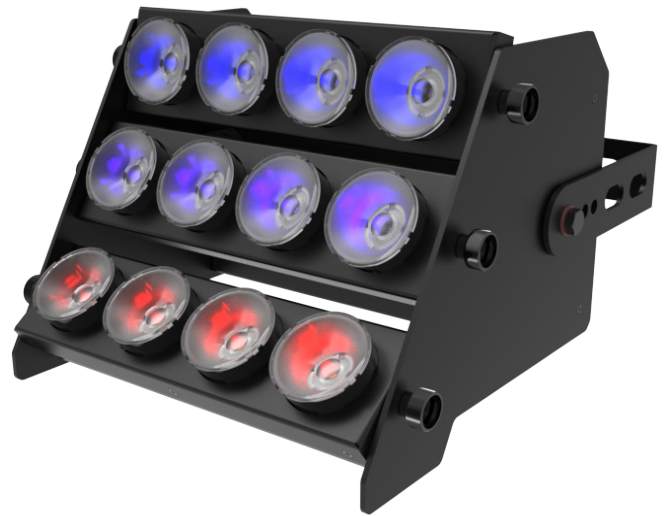
DATASHEET

Introduction

A 100W LED flood light replacement with dual beam angles allowing for short and long-throw RGBW light to be evenly cast across large surface areas.

Mains power and DMX control for theatrical-grade dimming.

The three rows of RGBW LEDs are individually adjustable and fixed in place using thumb screws



Images for illustrative purposes only,
colour & finish may vary

Key features

- RGB + 3000K light @ 90CRI.
- Wide 36° + 2 x spot 15° adjustable rows of LEDs
- 100W total power draw
- Mains power input
- DMX/RDM control input

Technical Parameters

LED Colour	RGB + 3000K
CRI	90 Ra (@3000K)
Beam Angle Row 1	15°
Beam Angle Row 2	15°
Beam Angle Row 3	36°
Input Voltage	80-264VAC
Nominal Current Draw	450mA (@230V)
Nominal Power	100W
White Lumens	~5000 (@3000K)
RGB Lumens	~2000
LED Row Adjustment Angle	+20° to -20°
Control Protocol	DMX/RDM
Power Input	PowerCON TRUE1 (In & Thru)
Control Input	EtherCON (In & Thru)
Ingress Protection	IP20
Finish	Black Powder Coat
Driver Type	Internal 4Ch x 3
DMX Footprint (8-Bit)	5 (combined rows), 15 (individually controlled rows)
DMX Footprint (16-Bit)	10 (combined rows), 30 (individually controlled rows)
Personality Selection	via RDM

DMX Control

The fitting has a number of personality options:

8-Bit - Combined Rows

All LEDs will emit the same colour at a control resolution of 8-bits (255 control levels). This personality has a DMX footprint of 5, with the below addressing:

1	2	3	4	5
R	G	B	W	Master

16-Bit Combined Rows

All LEDs will emit the same colour at a control resolution of 16-bits (65,025 control levels). This personality has a DMX footprint of 10, with the below addressing:

1	2	3	4	5	6	7	8	9	10
R(Coarse)	R(Fine)	G(Coarse)	G(Fine)	B(Coarse)	B(Fine)	W(Coarse)	W(Fine)	M(Coarse)	M(Fine)

8-Bit Individually Controlled Rows

Each row of LEDs can be controlled separately at a control resolution of 8-bits (255 control levels). This personality has a DMX footprint of 15.

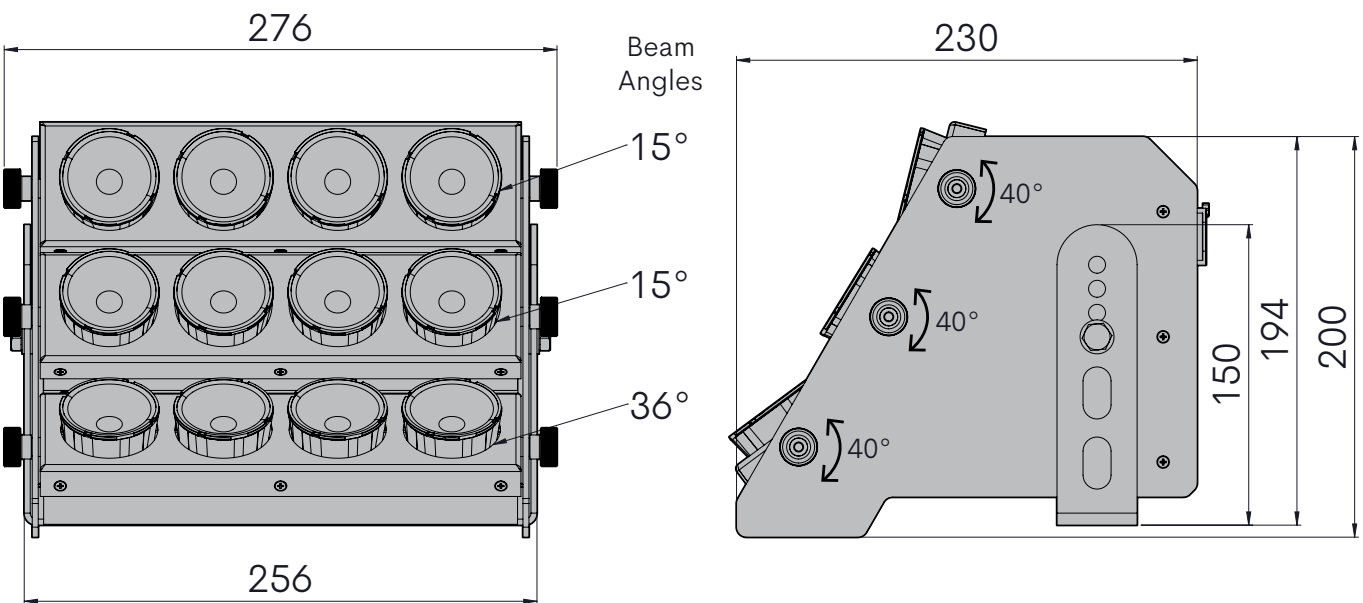
The channels take the same format as above 8-bit but individually for each row.

16-Bit Individually Controlled Rows

Each row of LEDs can be controlled separately at a control resolution of 16-bits (65,025 control levels). This personality has a DMX footprint of 30.

The channels take the same format as above 16-bit but individually for each row.

Dimensions



Specifications are subject to change without notice.

1K FTW Globe, 1800-3000K IPM, Crackle Glass



Model No: SPL02745

DATASHEET

Introduction

A 12.8W LED custom module for recessed ceiling installation.

Connect to a GDS IPM Output Card for theatrical-grade dimming using the existing cable infrastructure.

An internal machined acrylic rod with conical frosted end allows for 360 degree light emission within the crackled glass globe

Key features

- Fade-to-Warm 1800K-3000K white light with 90CRI.
- 360° light emission with crackled glass globe
- 12.8W nominal power draw
- 350mA nominal current
- Integrated IPM receiver
- >1000 Lumen Output



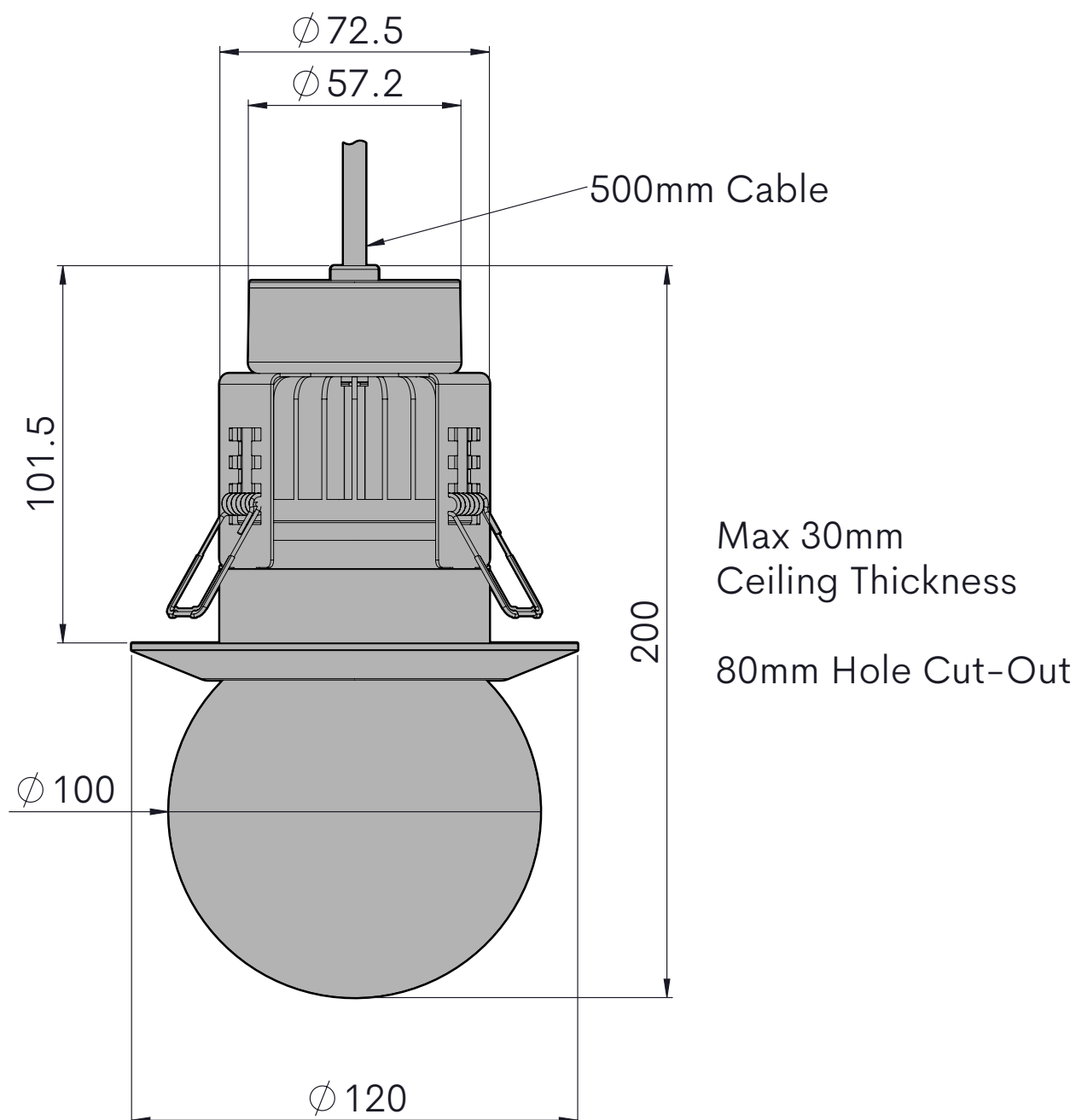
Images for illustrative purposes only,
colour & finish may vary

Technical Parameters

CCT	1800K-3000K Fade-to-Warm
CRI	90 Ra
Beam Angle	360°
Input Voltage	36-56V (via IPM)
Nominal Current Draw	350mA (@36V)
Nominal Power	12.8W
Control Protocol	GDS IPM
Input	2-Core Captive Lead
Ingress Protection	IP20
Bezel Colour	White
Light Output	>1000 Lumens
Required Driver	GDS DRIVE Hub IPM Output Card

**CAUTION: THIS IS A
LOW VOLTAGE DEVICE**

Dimensions



Specifications are subject to change without notice.