

Naturkraft Dome Projection – West jutland, Denmark

Name:

Naturkraft Dome Projection

Start date:

January 2023

Completion date:

22 June 2024

Approximate value:

100.000 Euro

Integrator:

We, at Stouenborg, acted as consultants and integrators of the entire AV system including the projector, sound, and light system inside the Full Dome exhibition at the Naturkraft Museum

Consultant/project manager or other companies specifically involved:

Tinker Imagineers were the exhibit designers and filmmakers on the project. GaiaNova helped us calculate calibration and mapping as well as the final placement of projectors.



Summary

The new exhibition at Naturkraft, which opened this summer, presents a full-dome experience about the history of wind power. Visitors are taken on a visual journey through the North Sea's history of wind power, from medieval windmills to modern wind turbines at Ringkøbing Fjord.

The exhibition displays historical artifacts by transforming a large dome into a 78 m² projection surface. The historical artifacts are displayed using film screenings in the ceiling of the fullness, and visitors learn about the forces of nature and man's attempts to control them.

Stouenborg has been responsible for consulting and integrating the complete visual system, making it possible with a 360° projection in the dome. Internal regulation has taken place via camera calibration in close collaboration with the developer at The Hive. Furthermore, Stouenborg has been responsible for the entire sound and lighting system in its entirety.



Client brief and requirements

Naturkraft Museum wanted to expand the dissemination of their knowledge of the history of wind power in a new exhibition at their museum in Ringkøbing. That's why they hired Tinker Imagineers, who are responsible for the design and creation of the project. Stouenborg was then contacted by Tinker Imagineers, who wanted help with advice and integration of an AV technical system that had to work in a fulldome. It should be possible to create a 360° projection in the ceiling of the dome, where it should be filled with film clips. In the middle of the dome, there was to be a large round showcase, which was to be divided into 6 rooms. Here, the light had to play a decisive role, in both eye-catching and storytelling. The overall system had to create an immersive experience for the museum's visitors and be operationally reliable so that it could function every day during the museum's opening hours.

Naturkraft Museum in Ringkøbing wanted to expand the dissemination of the history of wind power with a new and informative exhibition. For this project, they chose to collaborate with Tinker Imagineers, who were responsible for the design and layout of the exhibition. The exhibition

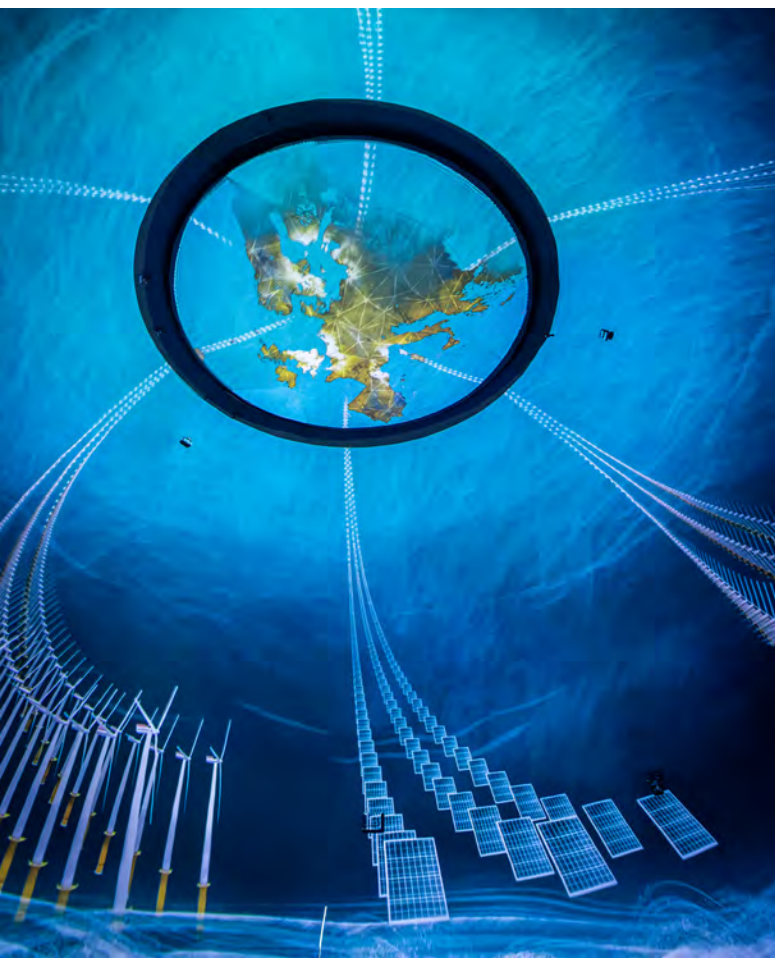
had to contain an immersive experience that would fascinate and engage the visitors through an advanced 360° fulldome projection. Stouenborg's projector solution should make it possible to show film clips on the entire ceiling of the dome so that visitors are surrounded by the projection.

The design of the exhibition also includes a large round showcase located centrally in the dome. The showcase is divided into six individual rooms, where the lighting design should play a central role, both as a visual eye-catcher and as part of the actual storytelling about the development and importance of wind power. This lighting should emphasize the exhibition's elements and at the same time ensure a coherent experience that supports the exhibition's messages.

In order to ensure a stable and trouble-free operation of the technical setup, which must be able to run daily during the museum's opening hours, Tinker Imagineers would enter into a collaboration with Stouenborg. Their task was therefore to advise and integrate a reliable and user-friendly AV technical system, which will make the Naturkraft Museum's vision of a complete, immersive exhibition a reality.

Area description

The exhibition area, which is located in a newly built dome, is a specially designed building that will create a unique experience for visitors. The dome has a height of 8 meters from the center of the floor to the top, and its diameter is 12.4 meters, creating a spacious and intimate atmosphere for the visitors. The design of the Dome sets the stage for an immersive experience, where the large, dome-shaped architecture frames the experience and gives an impressive sense of space.



Environmental considerations

When Stouenborg chooses design, technology, and materials, it is with an eye to the environment. Therefore, the entire AV system that is integrated into the Naturkraft Museum's new full-dome exhibition is power-controlled. This means that the whole thing can be switched on and off, depending on the need. This simple but effective function significantly reduces energy consumption at the museum.

Stouenborg also makes an active effort to recycle materials, such as excess cables, cardboard, and flamingo, instead of simply throwing them away. This effort reduces waste and resource consumption on the products used, and products not used on one project will be reused on other projects in the near future.

However, it is difficult to calculate the exact CO2 footprint for the integrated system, as it is a challenge to obtain accurate data on the different products' CO2 footprints from the different suppliers. As many manufacturers do not yet provide information on the environmental impact of their products, Stouenborg instead focuses on gaining as much insight as possible into their production methods and values. Therefore, their sustainability initiatives play a central role in the selection of suppliers.



Client testimonial

“

Done in a way that is at eye level with the visitors, while also being a spectacular excitement for young and old.

Review in Ringkøbing folkeblad



“

Through good storytelling, "banal" and "natural" things are made interesting.

Anna Petersen

Visitor at the Naturkraft Museum

“

The 'Dome' helps to tell an important story with effective and magnificent tools that are not seen very often in the context of museums in these parts.

Henrik Rasmussen

Chairmann at Naturkraft Museum

